

# The Southern CALIFORNIAN

PUBLISHED BY THE HISTORICAL SOCIETY OF SOUTHERN CALIFORNIA

WINTER 1992, VOL. 4, NO. 4



PHOTO: Denise Martin

*New Lummis Garden educational materials for school tours help students understand water conservation. Cynthia Null, project director, shares coloring pages with William Santizo of Alexandria Avenue School. The Ralph M. Parsons Foundation sponsored the project. Story, page 7.*

## Women's History Month Takes Awards Spotlight

The spotlight will focus on women who have made a difference for history in Los Angeles when the Historical Society celebrates "Women's History Month" on March 6th.

Five women whose vision and investment of time and energy have had a significant impact on our community will be honored at a special awards luncheon at the Doubletree Hotel in Pasadena.

The recipients will be: Margaret Bach, Founding President of the Los Angeles Conservancy; Peggy Funkhouser, Executive Director of the Los Angeles Educational Partnership; Carolyn Kozo, coordinator of the "Shades of L.A.: A Search for Photographic Ethnic History"; Gloria Lothrop, author of *A Guide to Historical Outings in Southern California*; Jean Bruce Poole, Historic Museum Director of El Pueblo de Los Angeles Historic Park.

In announcing the awards, HSSC

Executive Director Tom Andrews praised the women for "recognizing a need and responding to it, even before the April '92 riots. They serve as models for all of us as we approach the task of rebuilding Los Angeles."

This special award recognizes a specific, single achievement by each woman, even though each has contributed significantly to our community in other ways. Together, their achievements reflect the breadth of historical endeavor from preservation to education to scholarship. Moreover, each has had a public impact, has crossed ethnic and cultural lines, and has used history to bring Angelenos together.

Invitations to HSSC's Women and History Awards Luncheon will be mailed to Members and the interested public in late January. For more information contact HSSC: (213) 222-0546.

## Meet Director John Osborne

John Osborne, current Vice President of the Historical Society, agrees with Robert Kirsch that "History is too important to be left to the Ph.Ds."

Alongside a professional career as vice president and general manager of West Coast operations for the Glass Container Division of Owens-Illinois, Inc., John has pursued his love of history through his research, writing and collections.

John is past Sheriff of the Fresno Westerners and is also a Huntington Westerner. He is an ardent supporter of important libraries throughout the state.

High on his list of volunteer involvements is his work with the Madera school system's "Madera Method" program. Over 300 students in grades four through ten tackle a hands-on approach to learning history through research and biography. As manager of publications, John has had fiscal responsibility and production oversight of seven books published by the program.

John is an enthusiastic collector of materials by and about Charles Lummis as well as the work of M.F.K. Fisher and Idwal Jones.

He and his wife Barbara travel widely for pleasure and in pursuit of history.

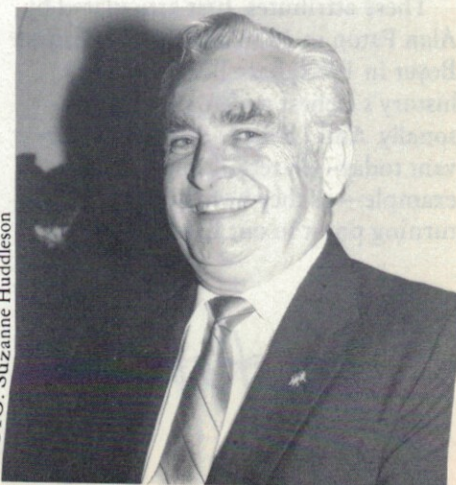


PHOTO: Suzanne Huddleson

*John Osborne*



## GRANTS



### GENTLE READER

Recently I shared with a friend that I thought the Historical Society was doing very well. I said I believe "we are on the right track" in terms of our programs, our publications and our presence in the community.

My friend agreed, smiled and then quoted a statement by Will Rogers: "Even if you're on the right track, you'll get run over if you just stay there!"

I laughed and thought "he's right." We can't rest on our laurels. There is important work still to be done. We must keep moving ahead.

We want to capture the rich tapestry of history and convey it to an even wider audience, from elementary students to adults. We want them to sense the power of history in their own lives.

Why? Because not only can history teach us lessons from the past, it can bring to us life-changing attributes as its gifts.

History can endow us with a generosity of spirit, a tolerance of others, an openness to change, a courtesy toward opposing views, a reaching for mastery without arrogance, a dedication to fairness and social justice and a belief in the worth and dignity of all mankind.

These attributes, first articulated by Alan Paton in 1953 and later by Ernest Boyer in 1982, have been some of history's richest rewards for me personally. And I believe they are as relevant today—in rebuilding L.A., for example—as they have been at every turning point in our history.

*Tom Andrews*

## Spring Street Foundation Funds W. W. Robinson Publication

The Spring Street Foundation has provided \$25,000 in grant support to underwrite the publication of *Southern California Local History: A Gathering of the Writings of W. W. Robinson*.

The volume is part of the commemoration of the centennial of Title Insurance and Trust Company in which the Historical Society is pleased to participate.

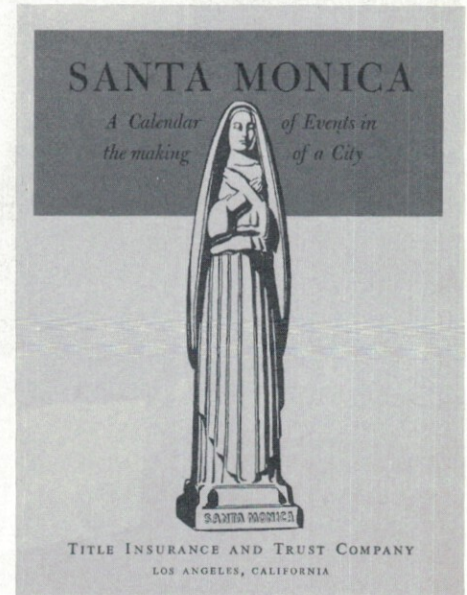
*Southern California Local History* brings together in one volume for the first time 21 of Robinson's Calendar Booklets on the communities, places and counties of Southern California.

The volume is edited with an introduction by Doyce Nunis, is designed by Ward Ritchie, and contains a foreword by Ernest Loebbecke, longtime chief executive of Title Insurance and Trust Company.

In 1935 Will Robinson wrote his first Calendar Booklet, *Land Titles in Long Beach*, as a "giveaway" by Title Guarantee and Trust Company to participants in a real estate meeting. The work was so popular that Robinson wrote three more that year on Santa Monica, Pasadena and Whittier.

After many years as a experienced title researcher, Robinson was uniquely

(Continued on page 8)



An example of the publications written for Title Insurance and Trust Company by W. W. Robinson.

## Parsons Grant Expands Education Component of Lummis Garden

The Ralph M. Parsons Foundation has awarded the Historical Society a grant of \$25,000 to further the educational purpose of the Lummis Waterwise Garden. Specifically, the grant will enable HSSC to install about 400 individual plant identification signs on the garden's rich variety of native and dry climate plants. In addition, the grant will underwrite the production of a guidebook to assist visitors in creating their own waterwise gardens.

From the beginning, the Lummis Garden was intended to be educational and practical. The physical layout, the types of plants and the relationship of the garden to the Lummis Home were designed to encourage visitors to use water-saving methods in their own gardens. The installation of a handsome orientation map and area signs

greatly enhanced accessibility to the garden's treasures.

Individual plant signs that present common as well as scientific names will ease visitors' search for plants in their local nurseries.

Since visitors can take home neither plant samples nor signs, Lummis Garden designer Bob Perry has written a guide to the waterwise garden. The guide, which will be available in April, is a simple and attractive workbook with an annotated list of plants found in the Lummis Garden.

This generous grant from the The Ralph M. Parsons Foundation builds on the Foundation's first award, which provided the educational panels near the dry streambed and materials for school tours.



## DONORS



*San Jacinto by plein air painter Paul Grimm, a recent gift to HSSC from Nestle USA, Inc.*

## Nestle USA, Inc. Contributes Historic Paintings

With a unique gift of art from its corporate collection, Nestle USA, Inc. continued its subsidiary Carnation Company's tradition of support for the Historical Society.

Earlier this year, Nestle donated two paintings by Paul Grimm to HSSC: *San Jacinto*, a large 43" x 60" oil on canvas, and *Etchings of the Elements*, a 38" x 50" oil. On November 10th, the pair were sold at auction by John Moran, Inc. for a total of \$16,500. Proceeds from the sale will go toward HSSC's programs and publications.

*(Continued on page 7)*

## Historic One Hundred

The HISTORIC 100 is a vital group of Southern California businesses committed to the preservation, interpretation and promotion of local history through their investments in HSSC.

Their contributions have underwritten the general operations of the Society since 1987.

### ARCO

Automobile Club of Southern California

Consulate General of Spain  
in Los Angeles

George A.V. Dunning Fund/  
California Community Foundation

John Randolph Haynes and  
Dora Haynes Foundation

Tom and Valley Knudsen Foundation

Lawry's Foods, Inc.

Los Angeles Dodgers, Inc.

Newhall Land and Farming Company

Will J. Reid Foundation

Security Pacific Foundation

Times Mirror

UNOCAL

J.B. and Emily Van Nuys Charities

Watson Land Company

## A Six Year Salute To HSSC's Corporate and Foundation Donors

During the past six years, 41 corporations and foundations have contributed over \$560,000 to the Historical Society for publications, programs, the waterwise garden at the Lummis Home and for general support.

This type of response is unprecedented in the 109 year history of HSSC and has made it possible for the Society to find new and improved ways of promoting history in the public arena.

As a result of this generous support the completion of the Lummis Garden will become a reality this year, the *Southern California Quarterly* maintains its position as a leading regional journal of history, and 15 books will have been published by the end of 1993.

It has been a joint effort of donors, members, volunteers, staff and board that has produced these results, but the significant investment by the foundation and corporate community of Southern California established the basis for success.

## Century II Founders

The Historical Society is pleased to recognize the significant contribution made by the following 11 corporations and foundations during the years 1990-1992.

Each one, as a Century II Founder, has given \$10,000 or more in support of the programs, publications and special projects of the Society.

These gifts have enabled the Society to enjoy the most productive three-year period of growth in its 109 year history.

The Ahmanson Foundation

ARCO Foundation

Associated Foundations, Inc.

John Randolph Haynes and  
Dora Haynes Foundation

Los Angeles 200 Committee

Nestle USA, Inc.

The Ralph M. Parsons Foundation

Spring Street Foundation

The Times Mirror Foundation

Watson Land Company

Weingart Foundation



## EVENTS

# Holiday Open House '92 A Toast to Members and Volunteers



PHOTO: Margaret Dickerson

"My holiday season officially begins with the Historical Society's open house," exclaimed HSSC Board member Sandra Burton. Although she may be biased, Sandra is not alone. Members often comment (throughout the year!) that the El Alisal Holiday Open House captures the gentleness and graciousness of the season in an otherwise hectic world.

With the pressures of another year already upon us, we might do well to remember on these pages, that our Members are what the Historical Society of Southern California is all about. We salute you and wish you a prosperous New Year!



PHOTOS: Denise Martin (except where noted)



## "Second Sunday Signings" Bring Authors to El Alisal

With the expansion of the El Alisal Book Shop, HSSC will offer more authors' events during 1993. Scheduled monthly throughout the year, "Second Sunday Signings" will give HSSC Members and the public an opportunity to meet prominent authors of history, gardening, art, literature and current events in the historic atmosphere of El Alisal, the Lummis Home and Garden.

On January 10, Dr. Martin Ridge, Senior Research Fellow at The Huntington, launches the program with his newest work, *Atlas of American Frontiers*.

Authors will not only sign their books but will speak briefly on their volume or on the body of their work.

Join HSSC for Second Sunday Signings in January through June and October through December. Our April 1993 program will be on the third Sunday. All programs begin at 2:00 p.m. Watch future newsletters for upcoming signings.

## Second Sunday Dates

- Jan. 10 *Atlas of American Frontiers*  
Martin Ridge
- Feb. 14 *John Randolph Hayes:  
California Progressive*  
Tom Sitton
- Mar. 14 *Landscape Plants  
for Western Regions*  
Robert Perry
- Apr. 18 *At the Arroyo's Edge:  
A History of Linda Vista*  
Beverly Wayte
- May 9 *Frontier Faiths*  
Michael Engh
- June 13 *Practicing Law  
in Frontier California*  
Gordon Bakken



Architect Paul Williams

## Paul Williams Lecture and Tour Celebrates Black History Month

The prodigious work of African-American architect Paul Williams will be the subject of two jointly-sponsored programs during Black History Month. HSSC joins Pasadena Heritage and the Southern California Chapter of the Society of Architectural Historians in co-sponsoring a lecture on February 11 and a tour on February 28.

Williams' granddaughter Karen Hudson will preview her upcoming book highlighting Williams' work, clients and design philosophy on February 11th at the historic Friendship Baptist Church, which was founded in 1893 and is listed on the National Register of Historic Places. The fee for the lecture is \$5; net proceeds will support restoration of the church.

The February 28th tour will take guests to the stately mansions and exclusive estates designed by Williams in the Pasadena and La Canada Flintridge areas. Advance tickets are \$18 (\$25 on tour day). Call Pasadena

Heritage for reservations and information (818) 793-0189.

Paul Williams, whose work spans the 1920s to the 1960s, was best known as a residential architect for

(Continued on page 7)

## Make a New Year's Resolution: Volunteer Now!

1993 is the year for you to consider volunteering at El Alisal. We need:

- House Docents
- Garden Docents
- Garden maintenance volunteers
- Help with packaging and mailing
- Help with programs and events

Just call Carole Dougherty at the Lummis Home (213) 222-0546 to volunteer.



## On the Book Shelf

by Robert Blew, Manager  
El Alisal Book Shop

In history, the latest is usually considered to be the best; however, occasionally, the old is better.

Two books bearing out this philosophy are Robert Glass Cleland's *The Cattle on a Thousand Hills: Southern California, 1850-80* (Huntington Library, hardback \$24.95, paperback \$12.95) and Glenn S. Dumke's *The Boom of the Eighties in Southern California* (Huntington Library, hardback \$24.95).

Dr. Cleland's book, although written in the 1930s and early 1940s, is still an outstanding example of how to observe a changing society. While he eschews statistics and the other trappings of social history, Dr. Cleland investigates change, conflicting roles, and the effects upon the Latino and Anglo societies.

Dr. Dumke's book does the same for a changing urban Los Angeles as Cleland's did for the pastoral society. As the rancho period ended, an influx of people on the new railroads created a modern, bustling, Anglo city to replace the sleepy, agricultural Hispanic village that had existed. Dr. Dumke traces the steps and events that were the beginnings of modern Los Angeles.

The only reason that Los Angeles exists is the availability of water, and to a lesser extent, all of California is dependent upon its unstable supply of water. Norris Hundley traces, for the first

time, the history of water in California in *The Great Thirst: Californians and Water 1770s-1990s*. (University of California, hardback \$25.00).

He starts with the Indian, and then the Spanish, both of whom used water but had little impact on it. With the Gold Rush, the need for water brought challenges to the Spanish system, and new methods of usage had to be developed. The beginnings of large scale agriculture created even more problems as the farmers attempted to insure an adequate water supply. Lawsuits established the strangest combination of laws known. Later, our growing cities created even greater problems.

Dr. Hundley clarifies the entire history, discusses the ecological effects of our water systems and gives some understanding of what faces us in the future.

Arthur C. Parker's *The Indian How Book* (Dover Publications, paperback \$5.95) provides much material on Indian life. Parker not only takes up the material objects of their life, but their social customs, religious ceremonies and some of their ethnic background. The major fault with the book is that it centers on eastern and plains Indians with little reference to California.

Grandkids, nieces or nephews from back East, or your own children—need a guide to what to do? Judy Cash's *Kidding Around Los Angeles: A Young Person's Guide to the City* (John Muir Publications, paperback \$9.95) could

be the life line for which you have been searching. Written at a level young teenagers can read, the book gives a short history of the city, discusses the sights in its various areas and even includes a guide to museums, especially those that would appeal to young people. The drawings are interesting. All in all, a handy book for a young visitor.

El Alisal Book Shop welcomes orders by mail, telephone or FAX. Members receive a 10% discount on the cover price. Please add 8.25% sales tax plus \$3.00 postage and handling for the first book and \$1.00 for additional books. Call HSSC before faxing orders. Telephone: (213) 222-0546. FAX: (213) 222-0771.

## FOR LOVE OF HISTORY TRIBUTES

In Honor of Joseph S. O'Flaherty  
Shirley and Darwin Horn

In Memory of Irving Stone  
Tom Andrews

## For Love of History: HSSC's Honor and Memorial Program

What better way to pay tribute to someone who has loved history than to enable HSSC to broaden its outreach to Southern California through publications and programs.

Donations of any amount are welcome, and each donor will be thanked publicly in this newsletter. HSSC will send a greeting card with an appropriate message to your honoree or to a loved one of the individual whom you wish to remember.

You will find "For Love of History" the perfect way to acknowledge special achievements, birthdays, anniversaries, or holidays as well as honoring the memory of a loved one.

"For Love of History:  
The HSSC Tribute Program to Honor or Remember Family and Friends"

\_\_\_\_\_ Memorial \_\_\_\_\_ Honor \_\_\_\_\_  
(Occasion)

Name \_\_\_\_\_  
(Please Print)

Send card to \_\_\_\_\_

Address \_\_\_\_\_

City \_\_\_\_\_ State \_\_\_\_\_ Zip \_\_\_\_\_

★ ★ ★ ★ ★

Donor's Name \_\_\_\_\_

Address \_\_\_\_\_

City \_\_\_\_\_ State \_\_\_\_\_ Zip \_\_\_\_\_

Daytime Telephone (\_\_\_\_\_) \_\_\_\_\_

Contribution enclosed: \$ \_\_\_\_\_

Please send check payable to: HSSC, 200 E. Avenue 43, Los Angeles, CA 90031



## New Educational Materials Enhance School Tours

Thanks to a grant from The Ralph M. Parsons Foundation, teachers and students will be better prepared to learn from the Lummis Home and Garden. Funding for the school tours project resulted from a multi-part request to the foundation for educational panels and practical materials for schools.

Cynthia Null, project director and veteran Lummis Home and Garden docent, carefully identified teacher and student needs before drafting the materials and commissioning drawings. In a "preview packet" teachers receive the essential facts: map for locating El Alisal, tour procedures and reservation form. To prepare students, teachers are armed with a thorough description of the house and garden, some historical facts and samples of follow-up materials.

On tour day, teachers and students explore the Lummis Home and Garden

with a trained docent. An hour seems hardly enough time to learn about so much: Charles Lummis and his times, how the house was built, and what a waterwise garden is all about. But many teachers and children return either with their classes or families; the tour is meant to be an introduction.

Back in the classroom, teachers can make use of the "post-tour packet" to reinforce new facts and ideas. Eight drawings representing aspects of the garden can be reproduced for the students to color and study. Discussion questions tailored to elementary or secondary students facilitate further study of local history. Finally, a teacher evaluation form offers feedback to further refine school tours.

Teachers wishing to book a tour of the Lummis Home and Garden should call HSSC at (213) 222-0546 for available dates and a preview packet.

NESTLE USA, INC.  
(Continued from page 3)

Commenting on the gift, Executive Director Tom Andrews noted, "The Board and I consider Nestle's gift an expression of trust in the Society, trust that our disposition of the paintings would be in keeping with the significance of the works and would reflect well on our corporate donor. We were pleased to report to Nestle that the sale constituted a major gift to the Society."

Paul Grimm (1892-1974) is best known for capturing the many moods of the southern California desert.

PAUL WILLIAMS  
(Continued from page 5)

movie moguls and stars who lived in Beverly Hills, Brentwood and Holmby Hills. Yet many of his most significant remaining works are located in Pasadena and La Canada Flintridge. He also had major commissions for important public works, including the LAX Theme Building and L.A. County Administration and Superior Court Building. Paul Williams enjoyed both a national and international reputation.

## Students Follow '49er Diary in Covered Wagons

Twelve sixth grade students driving two covered wagons pulled by five mules and guided by four outriders will reach the San Gabriel Mission on Monday, January 25, after a 20-day trek that began in Nogales, Arizona.

The students and their history teacher are retracing the steps of William P. Huff, a '49er who kept a detailed diary of his journey from Arizona to California's Gold Country.

The students will be welcomed at the Mission by Dr. Thomas F. Andrews, Executive Director of HSSC, and by members of the Board of Directors. Andrews has praised the endeavor as an "outstanding example of how to make history immediate, personal and compelling to young people."

The trip is part of the hands-on study of history known as the "Madera Method." Bill Coate, a Madera master teacher, developed the method seven years ago. Since that time his students have annually published their original research in a book.

The trek this year is an extension of the students' studies. Not only have they read and carefully studied Huff's original unpublished diary, but they are travelling his exact route in wagons they built.

Eventually the students will publish Huff's diary adding their own photographs and maps to the publication. It is an experience not to be forgotten—and one certainly to be celebrated!



Bill Coate



# SAVE THESE DATES:

- Jan. 10 Second Sunday Book Talk  
2 p.m.
- Jan. 23 Docent Orientation  
10 a.m.
- Jan. 25 Welcome Madera Students  
2 p.m.  
San Gabriel Mission
- Feb. 6 Conference on the History of  
Development in Southern  
California "Changing Cities"  
Huntington Library
- Feb. 11 Lecture on Architect  
Paul Williams  
Friendship Baptist Church  
Pasadena
- Feb. 14 Second Sunday Book Talk  
2 p.m.
- Feb. 28 Tour of Paul Williams Homes  
La Canada Flintridge
- Mar. 6 Community Enrichment  
Awards Luncheon  
Doubletree Hotel  
Pasadena
- Mar. 14 Second Sunday Book Talk  
2 p.m.
- Apr. 4 Seventh Annual Garden  
Open House  
10 a.m. to 4 p.m.

## SPRING STREET FOUNDATION

(Continued from page 2)

suiting to this newly created form of local historical writing. He used original sources, particularly land records, and combined his meticulous research with his voracious reading of Southern California classics such as Sarah Bixby Smith's *Adobe Days*.

These Calendar Booklets, together with the impressive volume of his additional historical writings earned him during his lifetime the well deserved title of the dean of Southern California local historians.

The W. W. Robinson volume will be published later this spring and HSSC members will receive advance notice and a pre-publication discount.

- Apr. 18 Second Sunday Book Talk  
2 p.m.
- May 1 Lecture  
"Estelle Carie Doheny:  
The Lady"  
Msgr. Francis Weber  
Doheny Mansion
- May 9 Second Sunday Book Talk  
2 p.m.
- May 16 Museums of the Arroyo
- June 5 President's Circle Trek  
Led by Gloria Lothrop
- June 13 Second Sunday Book Talk  
2 p.m.

THE SOUTHERN CALIFORNIAN is published quarterly by the Historical Society of Southern California which is a California non-profit corporation [501(c)(3)]

Thomas F. Andrews  
*Executive Director*

Denise J. Martin  
*Consultant*

*Contributors:*  
Margaret Dickerson  
Carole Dougherty  
Michael Sanborn  
Robert Blew

*Printing & Mailing*  
Licher Direct Mail

The offices of the Historical Society of Southern California are located in the Lummis Home, 200 East Avenue 43, Los Angeles, CA 90031.

**HSSC Office Hours**  
9-5 Monday - Friday

**Lummis Home**  
Open to the Public  
12-4 Friday - Sunday

**Group Tours**  
Friday morning by  
appointment

(213) 222-0546

## HISTORICAL SOCIETY OF SOUTHERN CALIFORNIA FOUNDED 1883 INCORPORATED 1891

### ALL MEMBERS RECEIVE . . .

Annual subscription to the *SOUTHERN CALIFORNIA QUARTERLY*  
Annual subscription *The Southern Californian*  
10% Discount in the El Alisal Book Shop  
Free Lummis Garden Open House and  
December Holiday Open House

### IN ADDITION . . .

☐ \$25 Student Members and  
☐ \$35 Individual Members  
receive:  
Discounted program  
and event tickets for  
Member

☐ \$ 50 Dual/Family Members receive:  
Discounted program and event  
tickets for family members.  
☐ \$ 100 Contributing Members receive:  
All of the benefits above  
plus . . . One special publication  
☐ \$ 250 Patron Members receive:  
All of the above plus . . . Two  
special publications

☐ \$ 500 Benefactor Members receive:  
All of the above plus . . . A  
Docent-led tour of the Lummis  
Home and Garden for four.  
☐ \$1,000 President's Circle Members  
receive:  
All of the above plus . . . Lectures  
and receptions for President's  
Circle members featuring noted  
southern California historians.

Please enroll me as a member in the *Historical Society of Southern California* in the category checked above.

☐ Check enclosed, payable to the *Historical Society of Southern California*.

☐ NEW MEMBER ☐ RENEWAL ☐ GIFT MEMBERSHIP

NAME \_\_\_\_\_

ADDRESS \_\_\_\_\_

CITY \_\_\_\_\_ STATE \_\_\_\_\_ ZIP \_\_\_\_\_

TELEPHONE ( \_\_\_\_\_ ) \_\_\_\_\_

*The Southern Californian*  
200 East Avenue 43  
Los Angeles, CA 90031

ADDRESS CORRECTION REQUESTED

Non-Profit  
U.S. Postage  
PAID  
Permit #559  
Pasadena, CA

*Membership contributions are tax-deductible within the limits allowed by law.  
For further information call HSSC at (213) 222-0546.*