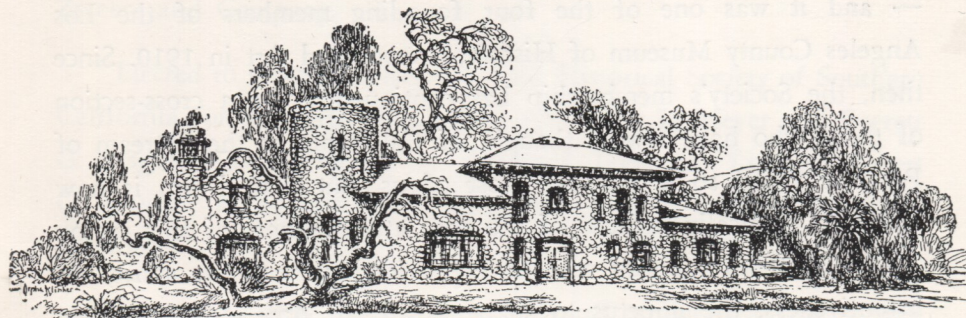


NEWSLETTER



Anna Marie Hager

Editors

Robert G. Cowan

Volume III

1970

Number 2



Letter from the Society President, Russell E. Belous to the Membership:

It is both an honor and a challenge to have been elected as your President. Now in its 87th year, the Historical Society of Southern California has long been known for its carefully drawn

traditions of fine publishing and community service. Both were begun early in its career — the *Annual* (1884), the *Quarterly* (1935) — and it was one of the four founding members of the Los Angeles County Museum of History, Science and Art in 1910. Since then, the Society's membership has continued to be a cross-section of those who have always thought of California as the "Dream of Paradise"; and so it *was* for most of us, but that dream is now tarnished ironically because of the very attractiveness of this region — the southern counties who have provided us with the spirit, the inventiveness, the impetus to shape this land, America's last great frontier.

Of the many threats to our untrammelled dream, the increasing lack of concern for conservation may be our most serious one; for we must conserve not only our national resources — but our historical as well. As we face this challenge, it is my earnest hope that the Historical Society of Southern California will act quickly and effectively in so preserving the best of our nation's cultural heritage. Whether it be to save a stately mansion or single small artifact, we will need your help.

Finally, your Program Committee has again planned a series of exciting events for this year. Your support in these and other Society activities is most cordially welcome.

Russell E. Belous,
President

COMING SOCIETY MEETINGS

November 18, 8 p.m.: Authors, Colonel Joe Klaas and Mr. Joseph Gervais, will discuss their new book, *Amelia Earhart Lives: A Trip Through Intrigue to Find America's First Lady of Mystery*. This will be an illustrated lecture.

December 16, 8 p.m.: *Magicians, Magic, and Illusions of Mid-19th Century America* will be discussed and demonstrated by John Zweers and Company.

Elected to serve as officers in your Historical Society of Southern California for the forthcoming term are: Larry L. Meyer and Everett G. Hager, Vice-presidents; N. Bradford Trenham, Treauer, Robert G. Cowan, as Secretary and Miss Margaret J. Cassidy, Executive Secretary.

Welcomed as new members to the Board of Directors were: Miss Doris E. Harris, Mrs. Roberta A. Johnson, Thomas S. McNeill, Victor R. Plukas and Warren S. Rogers.

An unusual opportunity is now available for our student members and we reprint, with pleasure, the announcement received from *The Heritage Foundation* of Deerfield, Massachusetts and their offer to undergraduates (single) students of sophomore, junior, or senior standing in an American or Canadian college. Only seven young men will be chosen for the 1971 program scheduled for June 22 to August 21, 1971.

Fellowships provide a stipend of \$300, board and room while in Deerfield, transportation to and from Deerfield, and expense-paid trips to several American museums. The study is for students interested in the field of history.

Application forms may be obtained by writing *The Heritage Foundation*, 1971 Summer Fellowship Program, Deerfield, Massachusetts, 01342. Address inquiries to: Donald R. Friary, Head Tutor. Applications must be mailed before February 1, 1971.

The 1970 Conference of California Historical Societies annual Workshop will be held at the Charles W. Bowers Memorial Museum, 2002 N. Main Street, Santa Ana, November 7 and 8. 200 Years of

Ceramics in California will be covered with exhibit clinics, demonstrations and a working pottery shop maintained in the Museum. Please send your inquiries to: Merton E. Hinshaw, Director of the Bowers Memorial Museum.

Of exceptional interest and an invaluable source item for our members is the excellent and detailed guide (for southern Californians of all ages): "Where to Take the Kids in Southern California," appearing in the September issue of *Westways*, publication of the Automobile Club of Southern California.

Those colorful Christmas Greeting cards with the fine reproduction of a Duncan Gleason painting of Cabrillo's ships along our California coastline, lend a strong emphasis to the rich historic background that is California's. These cards issued by your Historical Society are still available in very limited quantities.

Please place your order \$6.25 for 25 with envelopes (plus sales tax) with or without a Holiday greeting, directly with Mr. Ronald O. Swayze, 1868 St. Albans Road, San Marino, CA 91108. Proceeds, will of course, accrue to your Society. Order Now!!

Our Society's official home, *El Alisal*, The Lummis House, is being rejuvenated and improved! The Los Angeles Parks and Recreation Department are making it more attractive.

A portion of *El Alisal* is being prepared into a more workable office area which will surely help our Executive Secretary, Miss Cassidy.

Any member with time on his hands and the inclination to be of special service to the Society and to aid Miss Cassidy will be most welcomed to come in to assist with the relocation of the numerous

Lummis artifacts and the Society's possessions and office equipment. This volunteer service can be a one-time operation or semi-permanent.

Of paramount need are more hosts and hostesses to help meet the increasing number of visitors who come to see the famous and attractive home of Charles Fletcher Lummis, *El Alisal*.

Help! Help! If you cannot volunteer your time or efforts perhaps you might be able to contribute any or all of the following items which would prove of tremendous benefit for a smoother working operation of your Society. A vacuum cleaner (tank type); metal typewriter stand for a Model "B" (IBM) Electric Typewriter and filing cabinets — any size or color. For the Lummis home, blue Willow pattern dinner ware, any pieces will be appreciated. Please call Miss Cassidy, 222-0546 concerning any of the above needed items. Thank you.

A SALUTE TO THE SOCIETY'S AUTHOR-MEMBERS, 1969-1970

ADLER, PATRICIA, *Poems and Songs*.

——— *The Bunker Hill Story*. (revised edition)

BELOUS, RUSSELL E., *America's Black Heritage: an Exhibition at the Los Angeles County Museum of National History*

——— *A Distinguished Collection of Arms and Armor*.

——— and Robert A. Weinstein, *Will Soule, Indian Photographer at Fort Sill, Oklahoma, 1869-74*.

BILLINGTON, RAY ALLEN, "The Frontier and I."

——— and MARTIN RIDGE, *America's Frontier Story: a Documentary—History of Westward Expansion*.

CARPENTER, EDWIN H., Preface to: *Within the Vale of Annandale*.

——— with Glen Dawson, co-editor of the *Baja California Travel Series*

CAUGHEY, JOHN WALTON, *The American West: Frontier and Region*

- CLARKE, DWIGHT L., *William Tecumseh Sherman: Gold Rush Banker.*
- COWAN, ROBERT G., *A Backward Glance: Los Angeles, 1901-1915.*
- DAWSON, GLEN and E. H. CARPENTER, co-editors, *Baja California Travel Series.*
- GEIGER, MAYNARD, O.F.M., *Franciscan Missionaries in Hispanic California, 1769-1848.*
- GORDON, DUDLEY C., Introd. to facsimile edition, *A Tramp Across the Continent*
——— *Junípero Serra: California's First Citizen*
- HAGER, ANNA MARIE and EVERETT G., Indexes to current *Quarterlies* of the *Historical Society of Southern California*; the *California Historical Society* and to *The Pacific Historian*
——— *The Lost Islands of San Pedro.*
——— *California Under Twelve Flags* (revised edition)
- JACKSON, W. TURRENTINE, editor Adolphus Windeler, *The California Gold Rush Diary of a German Sailor.*
- KITTELL, WADE E., *Manuel Nieto — First Rancher in Downey.*
- LEHMAN, ANTHONY L., *Birthright of Barbed Wire: the Santa Anita Assembly Center for the Japanese.*
- MASON, WILLIAM M., *The Japanese of Los Angeles.*
- MEYER, LARRY L., Editor, *Westways*
- NUNIS, DOYCE B., Jr., editor, *The Southern California Quarterly*
- QUINN, CHARLES RUSSELL, *The Story of St. Thomas Indian Mission and the Forgotten Colorado River Missions at the Historic Crossing.*
——— and Elena Quinn, editors of *The Downey Historical Society Annual.*
- ROBINSON, W. W., Preface and notes to: *Sixty Years in Southern California, 1853-1913*, by Harris Newmark, 4th Edition.
——— Foreword to: *200 Books for California's 200th Birthday.* by John D. Bruckman

- *Rancho Topanga Malibu Sequit: an Historical Approach*
——— *Bombs and Bribery: the Story of the McNamara and Darrow Trials following the Dynamiting in 1910 of the Los Angeles Times Building.*

SMITH, HELEN C., Editor, *The Quarterly of the Pacific Coast Archeological Society.*

- SERVÍN, MANUEL P., editor, *The Apostolic Life of Fernando Consag, Explorer of Lower California*, by Francisco Zevallos
——— co-author with Iris H. Wilson, *Southern California and Its University: a History of USC, 1880-1964.*

SHUMATE, ALBERT, *The Life of George Henry Goddard, Artist, Architect, Surveyor, and Map Maker.*

STERN, NORTON B., *Mannie's Crowd: Emanuel Lowenstein, Colorful Character of old Los Angeles.*

VORSPAN, MAX and LLOYD P. GARTNER, *History of the Jews of Los Angeles.*

WEBER, FRANCIS J., *Missions and Missionaries of Baja California.*
———, *Thomas James Conaty, Pastor-Educator-Bishop.*

———, *The United States Versus Mexico: the Final Settlement of the Pious Fund.*

———, *What Happened to Junípero Serra?*

———, *Mission San Fernando: an Historical Perspective.*

———, *Christ on Wilshire Boulevard.*

———, *A Letter of Junípero Serra to the Reverend Preacher Fray Fermín Francisco de Lasuen.*

———, *America's first Vernacular Missal.*

———, *The Rebirth of a Library*, dedication of the *Bibliotheca Montereynsis-Angelorum Dioeceseos*, Mission San Fernando

WEINSTEIN, ROBERT A., and R. E. BELOUS, *Will Soule, Indian Photographer at Fort Sill, Oklahoma, 1869-74.*

WHEELLOCK, WALT, *Beaches of Baja.*

———, and Dick Cepek, *Rough Riding.*

WILLIAMS, DAVID A., *David C. Broderick: a Political Portrait.*

The Historical Society of Southern California



200 East Avenue 43
Los Angeles, California 90031

APPLICATION FOR MEMBERSHIP

The Historical Society of Southern California
200 East Avenue 43, Los Angeles, Calif. 90031

Date _____

To the Board of Directors:

Please accept my membership as a _____ Member in the
Historical Society of Southern California. I enclose my remittance in the
amount of \$ _____ for dues for the fiscal year of _____.

Name _____

Address _____

City _____

Proponent (if any) _____

MEMBERSHIP CLASSIFICATIONS

Active Member	\$15.00	Patron Member	\$100.00
Sustaining Member	\$25.00	Life Member	\$300.00
Contributing Member	\$50.00	Student Member	\$ 7.50

Dues include subscription to the Society's *Quarterly* and *Newsletter*. All dues, contributions, bequests are deductible under State and Federal tax provisions since the Society is a non-profit organization supported solely by membership dues and contributions.
